

Series SG

Pinch Valves



- ▶ Long cycle life
- ▶ Full-port opening
- ▶ Easy installation
- ▶ No maintenance
- ▶ Pneumatic or hydraulic operation
- ▶ Inexpensive sleeve replacement
- ▶ No moving parts

Series SG pinch valves are operated by applying hydraulic or pneumatic pressure to the annular space surrounding the elastomeric sleeve. No external actuator is required. The Series SG has no moving parts and is maintenance free. Its split housing allows quick, easy and inexpensive replacement of the elastomeric sleeve.

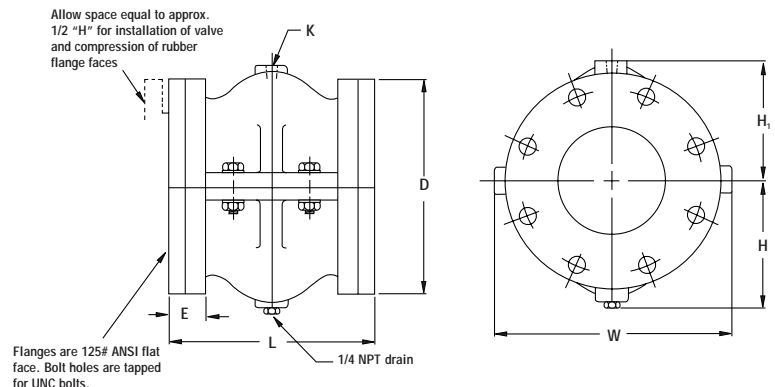
Pneumatic or hydraulic pressure must be regulated. Air supply should be approximately 20-30 PSI higher than line pressure in order to ensure full closure of the valve. Over-pressurization may cause premature failure.

Primarily for on-off service, the SG valve can provide approximate flow control using a booster relay. If a vacuum condition exists in the flow line, a vacuum generator or other source can be applied to fully open the valve.



Materials of Construction

- ▶ ANSI Class 125/150
- ▶ Body available in cast iron or aluminum
- ▶ Sleeve available in Pure Gum Rubber, Neoprene, Hypalon®, Chlorobutyl, Buna-N, EPDM and Viton®



Series SG Pinch Valves

Valve Size	Length L	Width W	Height		E	Port K NPT	D	Weight Aluminum lbs	Max Weight Cast Iron lbs	Working Pressure psi
			H	H ₁						
1	4	4 1/4	3	2 3/4	1	1/4	4 1/4	3	6	75
1 1/4	4 5/16	5 1/4	2 7/8	2 5/8	1 1/8	1/4	4 5/8	4	9	75
1 1/2	4 3/4	5 1/8	3 1/2	3 1/4	1 1/8	1/4	5	5	10	75
2	5 1/4	6 1/4	3 1/2	3 1/4	1 1/4	1/4	6	8	15	75
2 1/2	5 3/4	7	4	3 3/4	1 1/4	1/4	7	11	24	75
3	6	7 1/2	4 1/2	4 1/4	1 1/2	1/4	7 1/2	13	25	75
4	8	9 3/4	5 1/4	5	1 3/4	1/2	9	25	48	50
5	10	11	6 1/8	5 7/8	2	1/2	10	42	63	50
6	12	11 1/2	7 1/4	7	2 1/8	1/2	11	50	85	50
8	16	14 1/2	9	8 3/4	2 3/8	1/2	13 1/2	89	171	50
10	20	17	10 3/4	10 1/2	2 5/8	3/4	16	142	340	50
12	24	20	12	11 3/4	2 3/4	3/4	19	190	433	50
14	28	22 1/2	13 7/8	13 5/8	3 3/8	3/4	21	—	587	50
16	32	24 1/4	15 1/2	15 1/4	3 1/2	1	23 1/2	—	941	50